



FORKLIFT
PARTS & SUPPLY, INC.
802 WALNUT STREET
WATERFORD, PA 16441
(814) 453-5877
FAX (814)453-5879

***Forklift Parts & Supply, Inc. Is Proud To Present For Your Consideration
The New Viper Brand Line of Quality Materials Handling Equipment.***

**** Simplistic Design * Manufactured with Name Brand Components***

**** Unsurpassed Quality at a Low Cost Investment!***

Viper Lift Trucks, Inc. has been providing North America and beyond with quality NEW Forklifts and lift trucks. A trusted nationwide equipment dealer, Viper Lift Trucks offers a wide range of options that can meet any demand, from the smallest indoor applications to large outdoor work. All available Viper Lift Truck models are designed and produced with operator safety, comfort, productivity and efficiency in mind.

VIPER
LIFT TRUCKS



Viper Cushion Tire Lift Trucks

Viper Cushion Tire Lift Trucks offer the ultimate combination of power and performance, reliability, operator comfort, and economy. This series of trucks provides a well balanced mix of enhanced technology, operator comfort refinements, performance efficiencies and serviceability advances which will help to increase productivity and lower your operating costs.

4000-5000 lb Capacity · 3 Stage Mast · 84" / 189" Mast · Dual Fuel · Kubota WG2503 Engine · Load Backrest & Side Shift

Continued Next Page



Viper Pneumatic Tire Forklifts

Viper Pneumatic Tire Lift Trucks are robust and durable forklifts to handle the toughest tasks in the most demanding of applications with speed, power, and efficiency. These trucks offer the ultimate combination of power and performance, reliability, operator comfort, and economy.

3000-15,500 lb Capacity • 3 Stage Mast • 84" / 189" Mast • Dual Fuel • PSI 2.0 / 3.0 Engines & Kubota WG2503 ENGINES • Load Backrest • 48" Forks & Side Shift



Viper Pneumatic Diesel Forklifts

Viper Pneumatic Diesel Lift Trucks are robust and durable forklifts to handle the toughest tasks in the most demanding of applications with speed, power, and efficiency. These trucks offer the ultimate combination of power and performance, reliability, operator comfort, and economy.

3000-26,500 lb Capacity • 3 Stage Mast • 84" / 189" Mast • Cummins & Kohler Diesel Engines • Load Backrest • 48" Forks & Side Shift

Continued Next Page



Viper Sit-down Electric Trucks 3-Wheel & 4-Wheel

Viper Sit-down Electric Forklifts are Compact forklifts that provide the best combination of performance, efficiency, and value on the market. Viper's AC Drive and Hydraulic technology on this family of trucks enhances your investment in equipment, personnel, and efficiency.

3000-12,000 lb Capacity • 3 Stage Mast • 83" / 189" Mast • 48V Systems • AC Power • 48" Forks

Load Back Rest & Side Shift



Viper Model RT80 Rough Terrain, 4x4

Viper Rough Terrain Diesel Powered Forklifts are built to provide dependable service in the harshest environments. High performance, Modern Technology and Rugged Design and Construction provide a level of Performance Unsurpassed by any other manufacturer.

8,000 Lb. Capacity * 3 Stage Mast 97" / 196" * 4H50TIC Hatz Turbo Diesel Engine * 4 Wheel Drive (Can select 2 wheel drive) * Wet Front and Rear Brakes * 3 Speed For/2 Speed Rev Auto * Side Shifter * 48" Forks.

Continued Next Page



Viper Model RTD30 & 35 Rough Terrain, 2WD

Viper Rough Terrain Diesel Powered Forklifts are built to provide dependable service in the harshest environments. High performance, Modern Technology and Rugged Design and Construction provide a level of Performance Unsurpassed by any other manufacturer.

*6,00 & 8,000 Lb. Capacity * 3 Stage Mast 97" / 196" * Kohler KDI1903 Diesel Engine * 2 Wheel Drive * Wet Brakes
* 2 Speed For/2 Speed Rev Auto * Side Shifter * 48" Forks.*

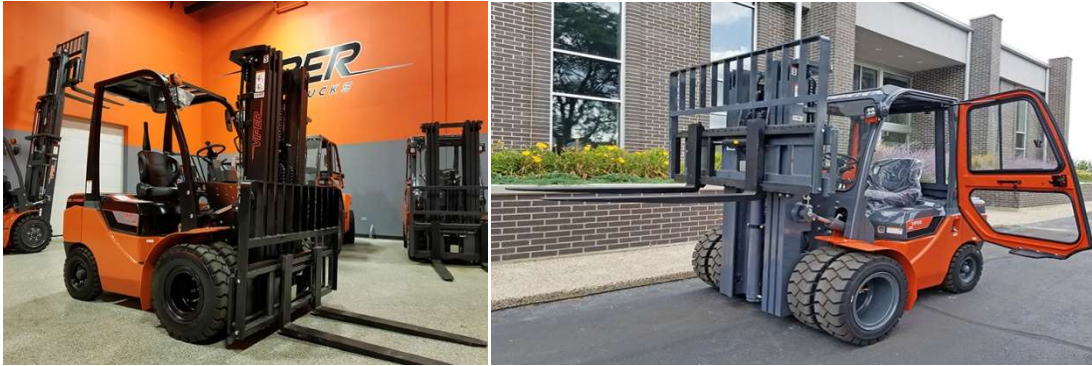


Viper Model RT11000 Rough Terrain Articulating

Viper Rough Terrain Articulating Diesel Powered Forklifts are built to provide dependable service in the harshest environments. High performance, Modern Technology and Rugged Design and Construction provide a level of Performance Unsurpassed by any other manufacturer.

*11,000 Lb. Capacity * 3 Stage Mast 110" / 196" * Cummins 3.9 Turbo Diesel Engine * 4 Wheel Drive * Dual Front Drives * Wet Brake System * 2 Speed Auto * Full Cab with Wipers, Heater, Lights * Side Shifter * 48" Forks.*

Continued Next Page



All possible Options (over 20) are Available on All Units.

Custom Color Options are also Available.

Available Options;

- ***Side shifting fork positioner attachment.***
- ***Dual drive tires.***
- ***Suspension seat.***
- ***Full cab with heater, wipers, lights.***
- ***Air conditioning (for units with cabs).***
- ***Dual air filter system.***
- ***Vertical exhaust system.***
- ***Fire extinguisher.***
- ***Full (front and rear) LED light package (standard front LED lights).***

Please inquire with your sales representative and/or contact our office with your equipment needs. We are confident you will be pleasantly surprised with the quality and cost savings Viper Brand equipment can provide.

Thank You, Mark Liggett, Sales Manager, Forklift Parts & Supply, Inc.

Ph: 814-679-4239 / Email: flpserie@gmail.com